



2022 Dead End Main (DEM) Elimination Project

SAWS has a program to eliminate dead-end water mains (DEMs) to meet the TCEQ standards. TCEQ highly encourages the elimination of DEMs by looping the water mains to avoid water quality, taste and odors issues. Through the looping, the overall number of DEMs required to be flushed as well as staff time associated with flushing activities is also reduced. Construction will involve installation of approximately 5,867 linear feet of 8” to 12” water main installation by open-cut and trenchless methods.

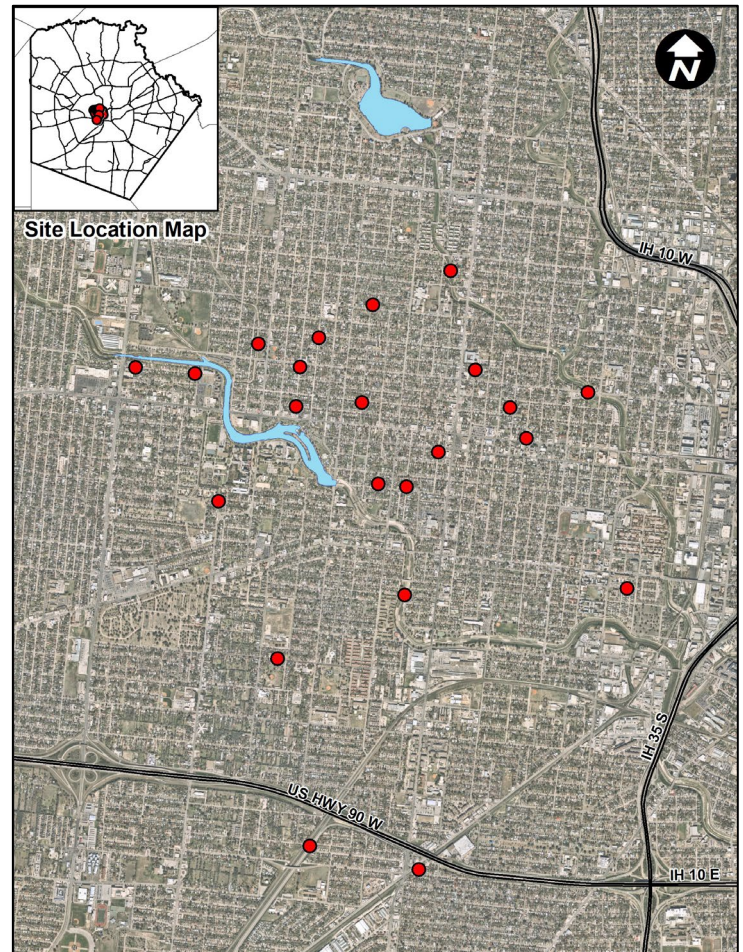
When Will Work Occur?

Construction start is planned for 2024. Estimated construction duration is 720 days.

Construction Elements:

Eliminate DEMs by installing connecting water mains via open-cut or trenchless technologies.

Site	Length of Main (LF)	Cross Street A	Cross Street B
1	112	Saltillo St.	
2	148	Landa Ave. (West)	
3	284	Landa Ave. (East)	
4	87	Morales St.	
5	249	NW 21 St.	
6	142	Camada St.	Ruiz St.
7	113	San Fernando St.	
8, 9	370	NW 22 nd St.	
10	190	NW 22 nd St.	W. Martin St.
11	164	N. Minter St.	
12	276	S. Picoso St.	
13	252	S. Spring St.	
14	250	S. Murray St.	
15	258	N. Rosillo St.	
16	222	Flan St.	
17	235	N. Cibolo St.	
18	451	W. Martin St.	
19	210	Colima St.	
20	344	Rivas St.	
21	557	Kirk Pl.	Harriman Pl.
22	330	Chihuahua St.	
23	623	Darby Blvd.	Arapahoe Dr.



For more information:

SAWS Engineering Manager

Cristina de la Garza, P.E.

Cristina.DeLaGarza@saws.org

SAWS Public Relations

Cecilia Picazo

210-233-3750

